

State of Wyoming Corner Record

(in compliance with the CORNER PERPETUATION AND FILING ACT, Wyoming Statutes, 1977, Section 36-11-101, et. seq., and the Rules and Regulations of the Board of Registration for Professional Engineers and Professional Land Surveyors)

Reverse side of this form may be used if more space is needed.

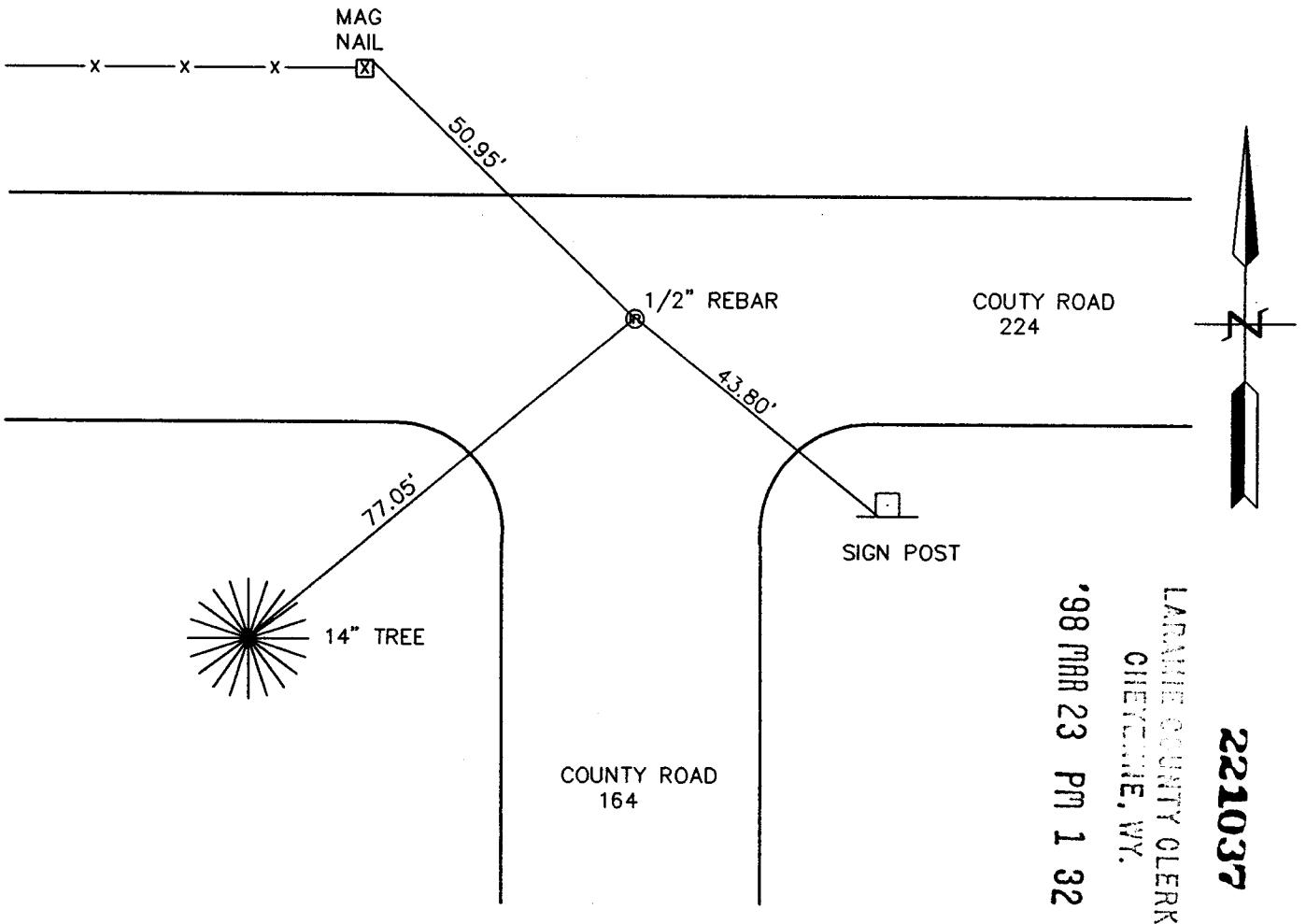
Record of original survey and citation of source of historical information (if corner is lost or obliterated). Description of corner monumentation evidence found and/or monument and accessories established to perpetuate the location of this corner. Sketch of relative location of monument, accessories, and reference points with course and distance to adjacent corner(s) (if determined in this survey). Method and rationale for reestablishment of lost or obliterated corner.

GLO RECORD: UNKNOWN.

MONUMENT FOUND: FOUND A 1/2" REBAR IN THE CENTER OF COUNTY ROAD 224 AND 164.

MONUMENT SET: NOTHING SET.

REFERENCES: MONUMENT LIES IN THE CENTERLINE OF COUNTY ROADS 224 AND 164.
SET MAG NAILS FOR REFERENCE.



LARAMIE COUNTY CLERK
 CHEYENNE, WY.
 98 MAR 23 PM 1 32
 221037

Date of Field Work: 10-11-97

Office Reference: 97241

Firm/Agency, Address

STEIL SURVEYING SERVICES, LLC.

1102 WEST 19th STREET

CHEYENNE WY 82001

Telephone Number: (307) 634-7273

This corner record was prepared by me or under my direction and supervision.

SEAL & SIGNATURE



CROSS INDEX DIAGRAM

A	1	2	3	4	5	6	7	8	9	10	11	12	13	14	15	16	17	18	19	20	21	22	23	24	25
B																									
C	6		5			4				3					2										
D																									
E																									
F																									
G	7		8			9				10					11										
H																									
J																									
K																									
L	18		17			16				15					14										
M																									
N																									
O																									
P	19		20			21				22					23										
Q																									
R																									
S																									
T	30		29			28				27					26										
U																									
V																									
W																									
X	31		32			33				34					35										
Y																									
Z	1	2	3	4	5	6	7	8	9	10	11	12	13	14	15	16	17	18	19	20	21	22	23	24	25

BOOK 1476

Corner Name: NE SECTION CORNER Section: 22 T.16N. R.60W. 6th P.M. Cross-Index No.: N-17

SBPPEPLS/PLSW: March 1994